

AMT Traditional Length G-Tubes

Order Numbers + Accessories

Traditional G-Tubes

Adjustable Length Gastrostomy Tubes

Balloon G-Tube

| AMT | ORDER NUMBERS | ENFit® ORDER NUMBERS |
|-----|---------------|----------------------|
| 12F | 7-1210 | 7-1210-I |
| 14F | 7-1410 | 7-1410-I |
| 16F | 7-1610 | 7-1610-I |
| 18F | 7-1810 | 7-1810-I |
| 20F | 7-2010 | 7-2010-I |
| 24F | 7-2410 | 7-2410-I |

AMT Balloon G-Tube kits are pouched (sterile) and sold 1/box.
Legacy (non-ENFit®) Balloon G-Tube kits are pouched with a pinch clamp.
ENFit® Balloon G-Tube kits are pouched with an ENFit® Single-Port to Y-Port Adapter and a pinch clamp.

Balloon Fill Volumes

The recommended water fill volume is clearly printed on each Balloon G-Tube. Consult your healthcare provider before adjusting the fill volume.

| Size | Min | Rec. | Max |
|------|------|--------|-------|
| 12F | 2 ml | 2.5 ml | 3 ml |
| 14F | 3 ml | 4 ml | 5 ml |
| 16F | 4 ml | 6 ml | 8 ml |
| 18F | 6 ml | 8 ml | 10 ml |
| 20F | 7 ml | 10 ml | 15 ml |
| 24F | 7 ml | 10 ml | 15 ml |



Capsule Dome G-Tube

| AMT | ORDER NUMBERS | ENFit® ORDER NUMBERS | GUIDEWIRE† |
|-----|---------------|----------------------|----------------|
| 20F | 9-C2020 | 9-C2020-I | -- |
| | 9-CG2020 | 9-CG2020-I | 0.038" x 90 cm |
| 24F | 9-C2420 | 9-C2420-I | -- |
| | 9-CG2420 | 9-CG2420-I | 0.038" x 90 cm |

AMT Capsule Dome G-Tube kits are pouched (sterile) and sold 1/box.
Legacy (non-ENFit®) Capsule Dome kits are pouched with a pinch clamp.
ENFit® Capsule Dome kits are pouched with an ENFit® Single-Port to Y-Port Adapter and a pinch clamp.
† Guidewire is included in a separate pouch (sterile).

Replacement Adapters + Accessories

| Device | Size | Description | Order # |
|--------------------------------------------------|---------------------------|------------------------------|---------------|
| Capsule Dome, Capsule Monarch® | | | |
| | 12F | Purple Y-Port | 4-2012 |
| | 14F | Purple Y-Port | 4-2014 |
| | 15F | Clear Y-Port XL | 4-2015 |
| | 20F | Clear Y-Port XL | 4-2020 |
| | 24F | Clear Y-Port XL | 4-2024 |
| | 12F | ENFit® Single-Port | 4-2012-ISOSAF |
| | 14F | ENFit® Single-Port | 4-2014-ISOSAF |
| | 20F | ENFit® Single-Port | 4-2020-ISOSAF |
| | 24F | ENFit® Single-Port | 4-2024-ISOSAF |
| Balloon, Capsule Dome, Capsule Monarch® | | | |
| | Universal ENFit® | ENFit® Single-Port to Y-Port | 4-0005-ISOSAF |
| Avoid Disconnections with Tube Securement | | | |
| | Medium CINCH® 4F - 17F | Box of 10 | CINCH417M-10 |
| | | Box of 50 | CINCH417M-50 |
| | Large CINCH® 9F - 30F | Box of 10 | CINCH930L-10 |
| | | Box of 50 | CINCH930L-50 |
| | Legacy Connections | AMT CLAMP™ Box of 10 | 4-3000 |

Replacement Adapters are individually pouched and sold 10/box. A pinch clamp is included in each pouch.

Capsule Monarch® G-Tube

| AMT | ORDER NUMBERS | ENFit® ORDER NUMBERS | GUIDEWIRE‡ |
|-----|---------------|----------------------|----------------|
| 12F | 9-C1210 | 9-C1210-I | -- |
| | 9-CG1210 | 9-CG1210-I | 0.018" x 70 cm |
| 14F | 9-C1410 | 9-C1410-I | -- |
| | 9-CG1410 | 9-CG1410-I | 0.018" x 70 cm |
| 18F | 9-C1810 | 9-C1810-I | -- |
| | 9-CG1810 | 9-CG1810-I | 0.038" x 90 cm |
| 20F | 9-C2010 | 9-C2010-I | -- |
| | 9-CG2010 | 9-CG2010-I | 0.038" x 90 cm |

AMT Capsule Monarch® G-Tube kits are pouched (sterile) and sold 1/box.
Legacy (non-ENFit®) Capsule Monarch® kits are pouched with a pinch clamp.
ENFit® Capsule Monarch® kits are pouched with an ENFit® Single-Port to Y-Port Adapter and a pinch clamp.
‡ Guidewire is included in a separate pouch (sterile).



Reduce Leaks

Improve Comfort + Safety

Ease of Placement

Exclusive Capsule Technology

For a complete list of products, visit us at www.AppliedMedical.net
800 869 7382 | CS@AppliedMedical.net | ICS@AppliedMedical.net



Traditional G-Tubes



Applied Medical Technology, Inc.
8006 Katherine Boulevard
Brecksville, OH 44141
www.AppliedMedical.net
An ISO 13485 Registered Company
Made in USA

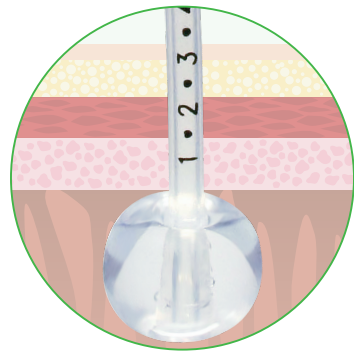


© 2024 Applied Medical Technology, Inc. C-4496-G
Patents: <http://www.AppliedMedical.net/Patents/> | Trademarks: <http://www.AppliedMedical.net/Trademarks/>
ENFit® is a registered trademark of GEDSA. | 1. Based on internal testing of 12F devices

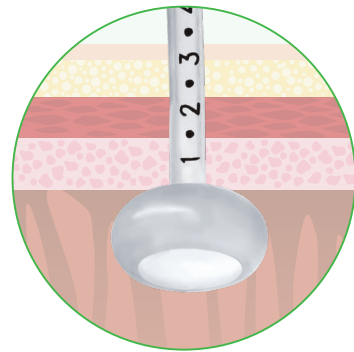


Innovating. Educating. Changing Lives.™

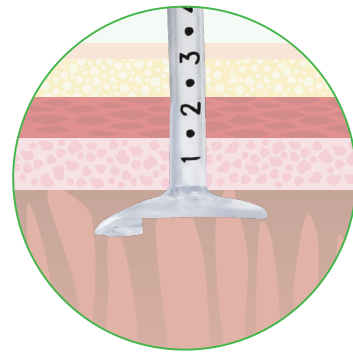
AMT Traditional Length G-Tubes An Advantage in Enteral Nutrition



Balloon



Capsule Dome



Capsule Monarch®

Exclusive AMT Capsule Technology Capsule Dome. Capsule Monarch®.

Ease of Placement

- Encapsulated internal bolster, self-lubricating to minimize discomfort during placement
- Often placed in the office or on-site
- Radiopaque for x-ray confirmation
- Guidewire compatible

Non-Balloon Internal Bolster

- Great alternative for patients who cannot sustain a balloon device
- Capsule Dome is durable + secure
- Capsule Monarch® internal bolster sits flush against the gastric wall

AMT Balloon G-Tube

Reduce Leaks

- Exclusive AMT Balloon expands horizontally to provide superior stoma coverage¹

Improve Comfort + Safety

- Balloon protects the distal tip of the tube, lowers the risk for gastric ulceration
- Enhanced External Retention Ring, minimizes contact and allows skin to breathe

Ease of Placement

- Often placed in the office or on-site
- Tapered tip design for easier placement
- Guidewire compatible
- Radiopaque for x-ray confirmation

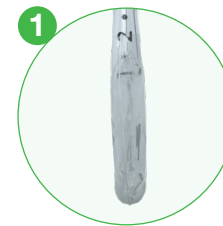
Balloon G-Tube

Legacy and ENFit®

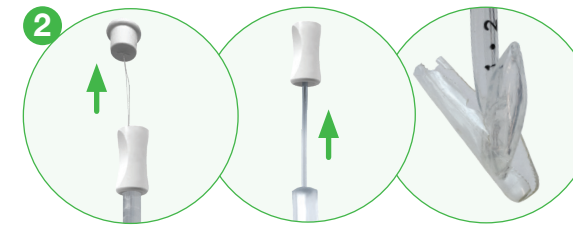
12F – 24F



Stages of Capsule Bolster Deployment



Encapsulated Bolster Inserted into Established Stoma



Tether Pulled to Split Capsule Material, Stiffener Removed

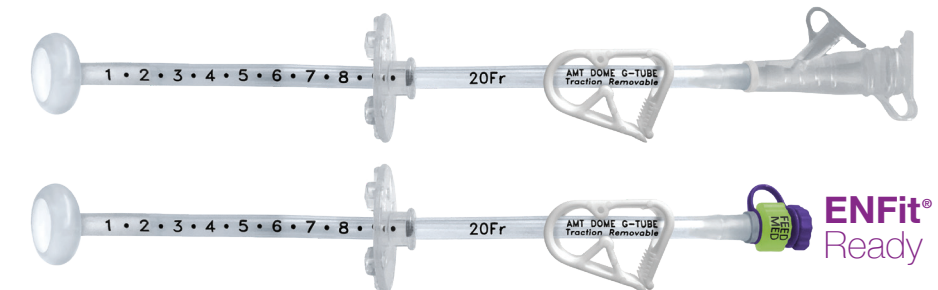


Capsule Material Falls Away and Dissolves Rapidly

Capsule Dome G-Tube

Legacy and ENFit®

20F, 24F



Capsule Monarch® G-Tube

Legacy and ENFit®

12F, 14F, 18F, 20F

